



CHART:

King Charles III Time Trial
BRIEFING INSTRUCTIONS
1pm 23rd November 2024

TACK TRACKER SOFTWARE MAP

BEARINGS:

ALL BEARINGS GIVEN ARE TRUE

DISTANCE:

ALL DISTANCES ARE IN NAUTICAL MILES

STARTLINE:

AN IMAGINARY LINE EXTENDING EAST FROM CHANNEL MARKER 17 THE START LINE EXTENDS .05Nm ALONG THIS LINE EAST SIDE OF THE MARKER 17 IS START DATUM.

FINISH LINE:

AN IMAGINARY LINE EXTENDING ON PORT SIDE OF MARKER #15

DATUM:

A POSITION ON THE START LINE NO.17 CHANNEL MARKER. 37°51.769'S,
144°55.303'E (WGS 84)

TIME:

GPS TIME.

ID:

CLUB BURGEES MUST BE FLOWN.

SAFETY:

CONTESTANTS MUST OBSERVE NAVIGATIONAL RULES AND SPECIAL CARE MUST BE TAKEN AT TURNING POINTS AND WHEN CROSSING CHANNELS.

WEATHER:

IN THE EVENT OF INCLEMENT WEATHER, PHONE BEN KOUTOUKIDIS 0487 887 887 AFTER 0800 HOURS ON THE DAY OF THE EVENT.

NOTES:

1. The trial will be conducted using the TACK TRACKER system and in line with the **Time Trial Rules** has changes due to RVMYC using Chanel Markers as a point of reference.
2. Checks will consist of a series of imaginary gates positioned at the start and finish lines and at all turn points. The gate boundaries will be at a turn either perpendicular or vertex to the turn with 100m to the inside of the turn marker. The penalty for missing the start gate will be 100 points. Missing other gates will incur a 50-point penalty.
3. It is the responsibility of each skipper to make sure their Tack Tracker is switched on and logging prior to starting the event. Tack Tracker usage instructions are available from the Race Committee on request.
4. Vessels must be on course and speed 1 cable before the start line. All vessels must keep at least 1 cable clear of the start line unless starting.
5. Official event start time will be 13:00 hours. Individual start times will be emailed to the address supplied on the entry form.
6. It is the responsibility of each skipper to monitor weather conditions and withdraw from the event if at any time they consider their vessel or crew at risk.
7. As the course uses physical markers as turn points, special attention is drawn to the instructions of this Time Trial.



King Charles III Time Trial

BRIEFING INSTRUCTIONS

1pm 23rd November 2024

8. Keep Clear

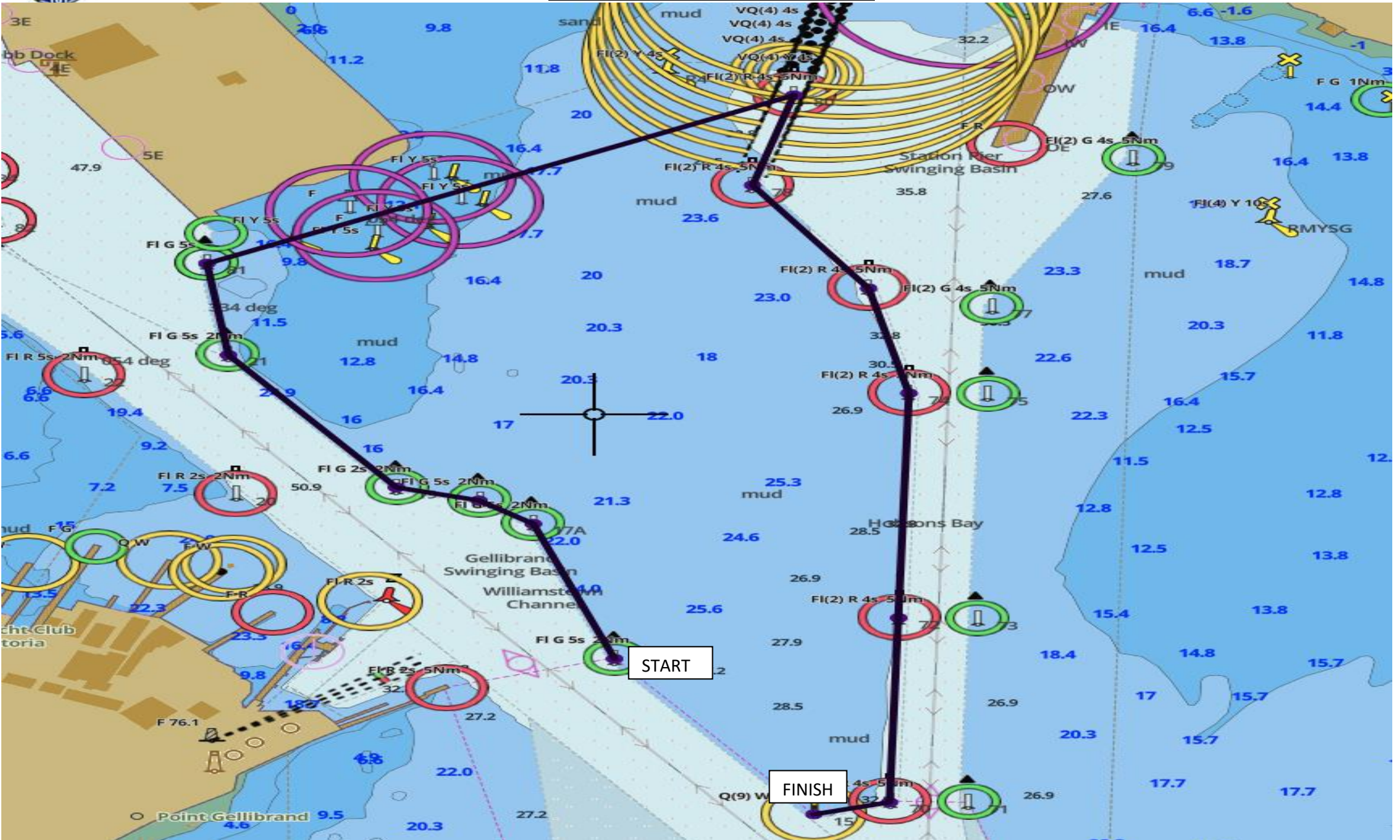
Vessels to which this section applies must keep out of the way of:

- vessels with an LOA of 50 m or greater (if in doubt, the Master should assume that the other vessel's length is 50 m or greater)
- a tug or lines boat assisting the movement, berthing or unberthing of another vessel.

Shipping channels and their approaches are areas where the interaction between large ships and small craft can be particularly hazardous. Small boat operators should exercise particular caution in the vicinity of these areas and must avoid impeding the passage of vessels which can safely navigate only within the confines of a shipping channel or fairway.



King Charles III Time Trial BRIEFING INSTRUCTIONS 1pm 23rd November 2024





King Charles III Time Trial

BRIEFING INSTRUCTIONS

1pm 23rd November 2024

RVMYC CUP Round 1 Instructions	
Start	Start At Marker 17 pass with Marker on the Port side heading toward Web Dock to Marker 17A
Turn 1	Pass marker 17A with marker on your Port side head to marker 19A
Turn 2	Pass Marker 19A with marker on the Port side continue to marker 19
Turn 3	Pass marker 19 with marker on Port side head toward marker 21
Turn 4	Pass marker 21 with marker on Port side heading to marker 81
Turn 5	Pass marker 81 with marker on Port side heading to marker 80
Turn 6	Pass marker 80 (Very Sharp Turn) with marker on Port side heading to marker 78
Turn 7	Pass marker 78 with marker on Port side heading to marker 76
Turn 8	Pass marker 76 with marker on the Port side back to marker 74
Turn 9	Pass marker 74 with marker on the Port side heading marker 72 (This leg is 6 Knots only)
Turn 10	Pass marker 72 with marker on the Port side heading to marker 70 (Normal Speed)
Turn 11	Pass marker 70 (Sharp Turn) with marker on Port side to Finish at marker 15
Finish	Pass Marker 15 with marker on Port Side

Rally Course for: King Charles III Time Trial 23rd November 2024

Course	Leg Distance (Nm)	Leg Bearing (True)	Leg Bearing (Mag)	Cum. Distance (Nm)	Latitude	Longitude
Start					37 51.769 S	144 55.303 E
Turn 1	0.247	338.5	326.6	0.247	37 51.539 S	144 55.188 E
Turn 2	0.069	301.6	289.7	0.316	37 51.503 S	144 55.114 E
Turn 3	0.091	300.2	288.3	0.408	37 51.457 S	144 55.014 E
Turn 4	0.311	323.5	311.6	0.719	37 51.207 S	144 54.780 E
Turn 5	0.151	352.2	340.3	0.869	37 51.058 S	144 54.754 E
Turn 6	0.69	62.8	50.9	1.559	37 50.743 S	144 55.530 E
Turn 7	0.17	194.6	182.7	1.728	37 50.907 S	144 55.476 E
Turn 8	0.23	147	135.1	1.959	37 51.100 S	144 55.635 E
Turn 9	0.201	169.6	157.7	2.16	37 51.298 S	144 55.681 E
Turn 10	0.421	181.1	169.2	2.582	37 51.719 S	144 55.671 E
Turn 11	0.349	181.8	169.9	2.931	37 52.068 S	144 55.657 E
Finish	0.078	261.2	249.3	3.009	37 52.080 S	144 55.559 E



King Charles III Time Trial
BRIEFING INSTRUCTIONS
1pm 23rd November 2024



King Charles III Time Trial BRIEFING INSTRUCTIONS 1pm 23rd November 2024 MAP of TIME TRIAL WITH GATE LOCATIONS

Settings Track Loader Create Races Race Editor NavRally: Sat18 RVMYC Cup Guide About Sign in

1km © 2024 HERE, Copyright. Based on data provided under license from PSMA Australia Limited. Product incorporates data which is 2014 Telstra Corporation Limited, GM Holden Limited, Intelematics Australia Pty

Long Name Track Map Tail Text Auto Sync Throttle Zoom Time of day

Windows taskbar: Type here to search, 17°C Sunny, 6:46 AM 9/05/2024