



**RVMYC CUP Round 1**  
**TIME TRIAL**  
**BRIEFING INSTRUCTIONS**  
**15<sup>th</sup> October 2023**

**CHART:** TACK TRACKER SOFTWARE MAP

**BEARINGS:** ALL BEARINGS GIVEN ARE TRUE

**DISTANCE:** ALL DISTANCES ARE IN NAUTICAL MILES

**STARTLINE:** AN IMAGINARY LINE EXTENDING EAST FROM CHANNEL MARKER 17 THE START LINE EXTENDS .05Nm ALONG THIS LINE EAST SIDE OF THE MARKER 17 IS START DATUM.

**FINISH LINE:** AN IMAGINARY LINE EXTENDING EAST FROM CHANNEL MARKER #21

**DATUM:** A POSITION ON THE START LINE NO.17 CHANNEL MARKER. 37°51.799'S,  
144°55.293'E (WGS 84)

**TIME:** GPS TIME.

**ID:** CLUB BURGEES MUST BE FLOWN.

**SAFETY:** CONTESTANTS MUST OBSERVE NAVIGATIONAL RULES AND SPECIAL CARE MUST BE TAKEN AT TURNING POINTS AND WHEN CROSSING CHANNELS.

**WEATHER:** IN THE EVENT OF INCLEMENT WEATHER, PHONE BEN KOUTOUKIDIS 0487 887 887 AFTER 0800 HOURS ON THE DAY OF THE EVENT.

**NOTES:**

1. The trial will be conducted using the TACK TRACKER system and in line with the Navrally Rules as adopted by RVMYC November 2013 as much as possible. Copies of the Rules are available from the RVMYC website.
2. Checks will consist of a series of imaginary gates positioned at the start and finish lines and at all turn points. The gate boundaries will be 100m to the inside of the turn marker. The penalty for missing the start gate will be 100 points. Missing other gates will incur a 50-point penalty.
3. It is the responsibility of each skipper to make sure their Tack Tracker is switched on and logging prior to starting the event. Tack Tracker usage instructions are available from the Race Committee on request.
4. Vessels must be on course and speed 1 cable before the start line. All vessels must keep at least 1 cable clear of the start line unless starting.
5. Official event start time will be 10:00 hours. Individual start times will be emailed to the address supplied on the entry form.
6. It is the responsibility of each skipper to monitor weather conditions and withdraw from the event if at any time they consider their vessel or crew at risk.
7. As the course uses physical markers as turn points, special attention is drawn to navrally rule 6.(f).
8. Special attention is also drawn to Navrally Rules Appendix A, (a), (b), (c), (d), (e), (f) & (k)



**RVMYC CUP Round 1**  
**TIME TRIAL**  
**BRIEFING INSTRUCTIONS**  
**15<sup>th</sup> October 2023**

**9. Keep Clear**

Vessels to which this section applies must keep out of the way of:

- vessels with an LOA of 50 m or greater (if in doubt, the Master should assume that the other vessel's length is 50 m or greater)
- a tug or lines boat assisting the movement, berthing or unberthing of another vessel.

Shipping channels and their approaches are areas where the interaction between large ships and small craft can be particularly hazardous. Small boat operators should exercise particular caution in the vicinity of these areas and must avoid impeding the passage of vessels which can safely navigate only within the confines of a shipping channel or fairway.

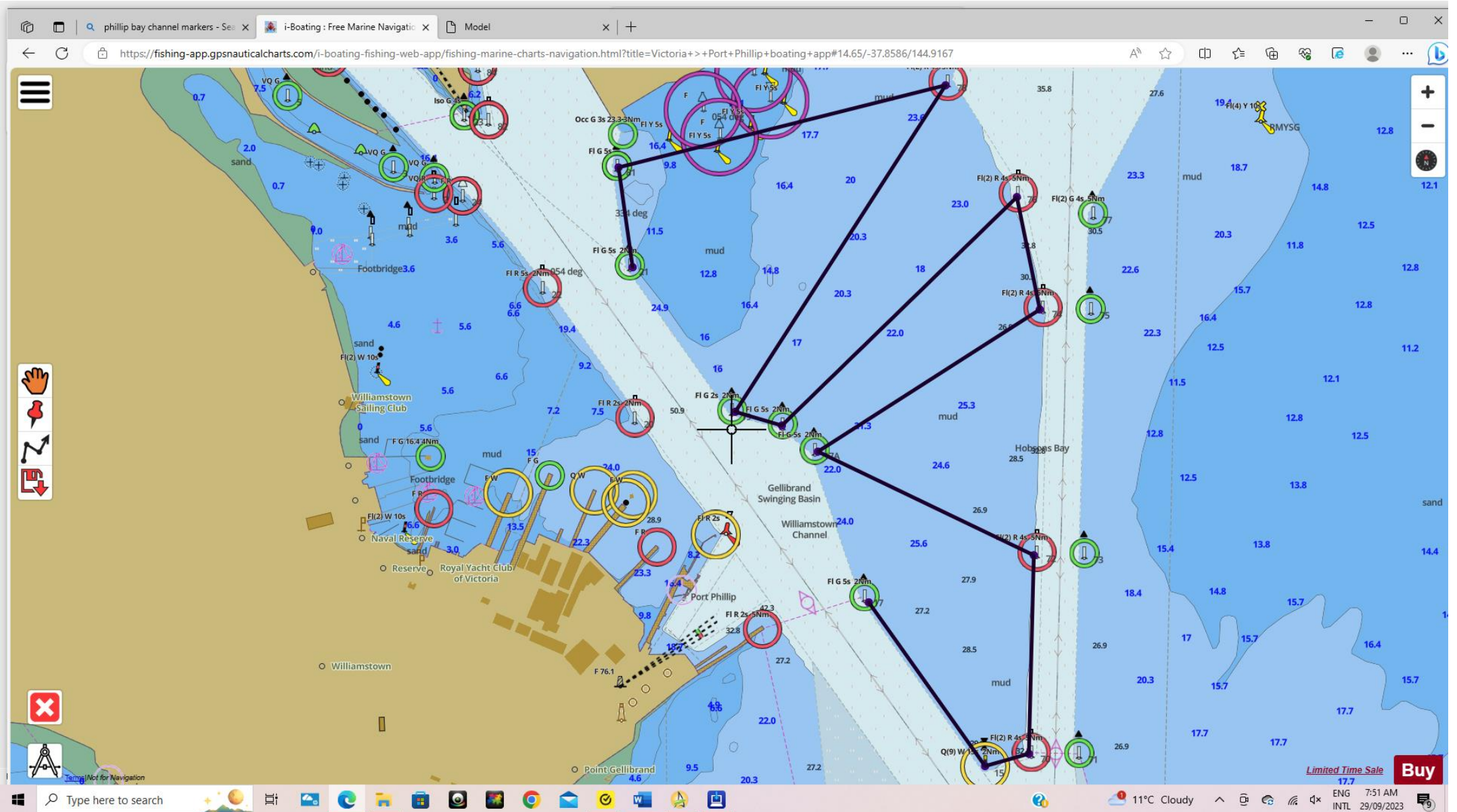


# RVMYC CUP Round 1

## TIME TRIAL

### BRIEFING INSTRUCTIONS

#### 15<sup>th</sup> October 2023





**RVMYC CUP Round 1**  
**TIME TRIAL**  
**BRIEFING INSTRUCTIONS**  
**15<sup>th</sup> October 2023**

<b>RVMYC CUP Round 1 Instructions</b>	
Start	At Marker 17 kept Marker on the Starboard side
Turn 1	Head S to marker 15 turn at marker 15 with marker on your Starboard side head to marker 70
Turn 2	Pass Marker 70 keeping marker on the Starboard side continue to marker 72
Turn 3	Pass marker 72 keeping marker on Starboard side head toward marker 17A
Turn 4	Pass marker 17A with marker on Port side heading to marker 74
Turn 5	Pass marker 74 with marker on Starboard side to marker 76
Turn 6	Pass marker 76 with marker on Starboard side heading west to marker 19A
Turn 7	Pass marker 19A with marker on the port side heading to marker 19
Turn 8	Pass marker 19 with marker on the Port side back to marker 78
Turn 9	Pass marker 78 with marker on the Starboard side heading marker 81
Turn 10	Pass marker 81 with marker on the Starboard side heading to marker 21
Turn 11	Pass marker 21 with marker on Starboard to Finish

# Rally Course for: RVMYC Cup Rn1 15 Oct 2023

Course	Leg Distance (Nm)	Leg Bearing (True)	Leg Bearing (Mag)	Cum. Distance (Nm)	Latitude	Longitude
Start					37 51.799 S	144 55.293 E
Turn 1	0.36	144.8	N/A	0.36	37 52.093 S	144 55.556 E
Turn 2	0.084	72.6	N/A	0.444	37 52.068 S	144 55.657 E
Turn 3	0.345	1.6	N/A	0.789	37 51.723 S	144 55.669 E
Turn 4	0.421	294.9	N/A	1.211	37 51.546 S	144 55.185 E
Turn 5	0.462	58.1	N/A	1.673	37 51.302 S	144 55.682 E
Turn 6	0.203	347.8	N/A	1.876	37 51.104 S	144 55.628 E
Turn 7	0.57	225.5	N/A	2.445	37 51.503 S	144 55.114 E
Turn 8	0.089	285.6	N/A	2.535	37 51.479 S	144 55.005 E
Turn 9	0.678	33.2	N/A	3.213	37 50.912 S	144 55.475 E
Turn 10	0.588	255.6	N/A	3.801	37 51.058 S	144 54.754 E
Finish	0.172	172.9	N/A	3.974	37 51.229 S	144 54.781 E