



# **RVMYC REGATTA** **NAVRALLY** **BRIEFING INSTRUCTIONS**

**Sunday 30<sup>th</sup> April 2023**

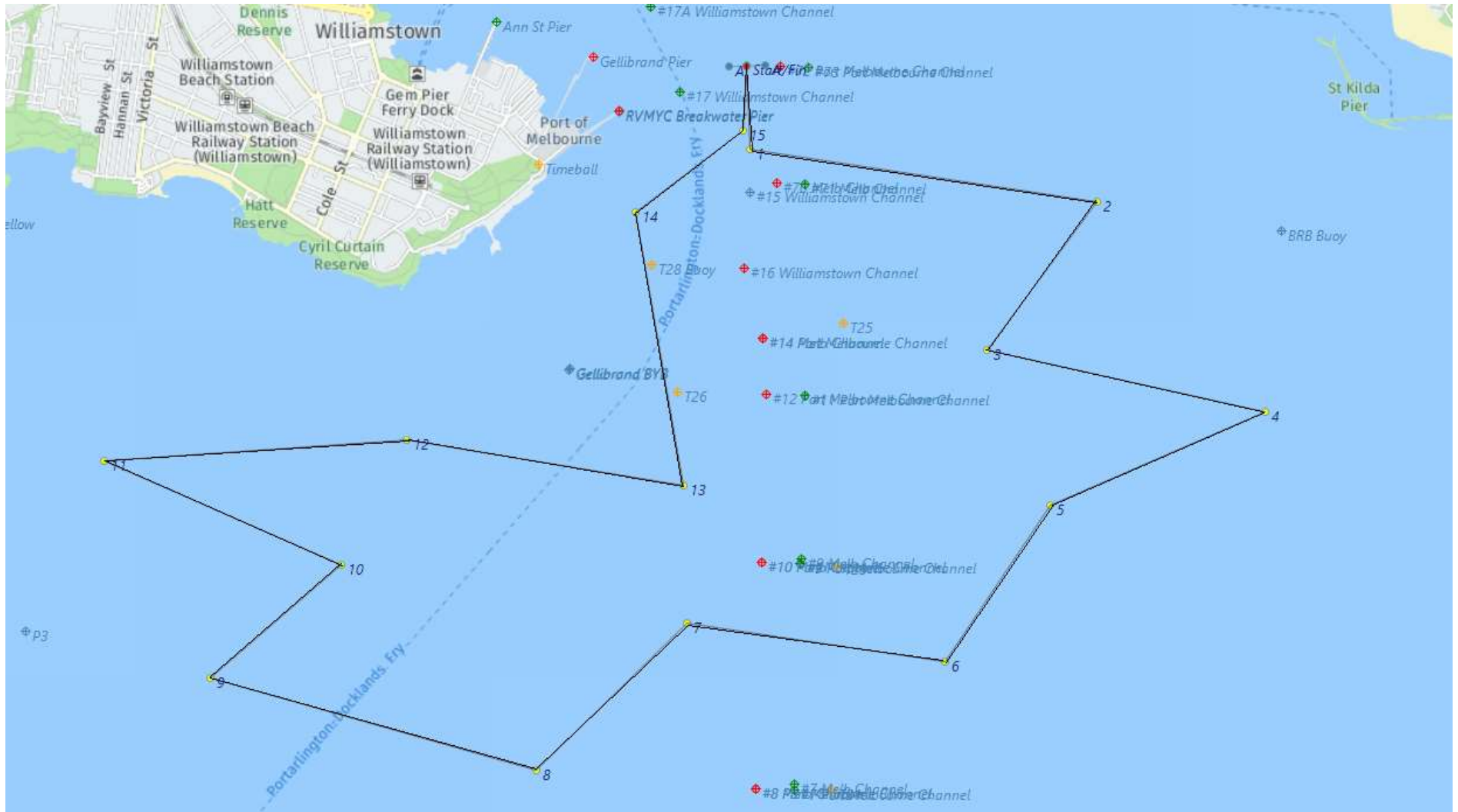
- CHART:** AUS 154 (2011-154)  
AUS 155 (2011-47-409-601-602)
- BEARINGS:** ALL BEARINGS GIVEN ARE TRUE
- DISTANCE:** ALL DISTANCES ARE IN NAUTICAL MILES
- START LINE:** AN IMAGINARY LINE EXTENDING WEST FROM CHANNEL MARKER 73 THROUGH CHANNEL MARKER 72. THE START LINE EXTENDS .05Nm ALONG THIS LINE EITHER SIDE OF THE START DATUM.
- FINISH LINE:** APPROXIMATELY AS FOR THE START LINE
- DATUM:** A POSITION ON THE START LINE APPROXIMATELY 0.1NM FROM NO.72 CHANNEL MARKER. 37°51.719'S, 144°55.543'E (WGS 84)
- TIME:** GPS TIME.
- ID:** CLUB BURGEES MUST BE FLOWN.
- SAFETY:** CONTESTANTS MUST OBSERVE NAVIGATIONAL RULES AND SPECIAL CARE MUST BE TAKEN AT TURNING POINTS AND WHEN CROSSING CHANNELS.
- WEATHER:** IN THE EVENT OF INCLEMENT WEATHER, PHONE BEN KOUTOUKIDIS **0487 887 887** AFTER 0800 HOURS ON THE DAY OF THE EVENT.
- NOTES:**
1. The trial will be conducted using the TACK TRACKER system and in line with the Navrally Rules as adopted by RVMYC November 2013. Copies of the Rules are available from the RVMYC website.
  2. Checks will consist of a series of imaginary gates positioned along the course. The gate boundaries will be .05Nm either side of the course centre line. The penalty for missing the start gate (if used) will be 100 points. Missing other gates will incur a 50 point penalty. The total penalty incurred for missing gates will be 300 points.
  3. It is the responsibility of each skipper to make sure their Tack Tracker is switch on and logging prior to starting the event. Tack Tracker usage instructions are available from the Race Committee on request.
  4. Vessels must be on course and speed 1 cable before the start line. All vessels must keep at least 1 cable clear of the start line unless actually starting.
  5. Official event start time will be 0925 hours. Individual start times will be emailed to the address supplied on the entry form.
  6. It is the responsibility of each skipper to monitor weather conditions and withdraw from the event if at any time they consider their vessel or crew at risk.

For further information please call:

**CLUB: 9393 2888 OR Ken Warren 0417 509 373.**

**RADIO WATCH:** A WATCH WILL BE KEPT ON CHANNEL 16 VHF

**EVENT COMMITTEE:** Ben Koutoukidis, Ken Warren



# Rally Course for: Regatta Cup 30 Apr 2023

Course	Leg Distance (Nm)	Leg Bearing (True)	Leg Bearing (Mag)	Cum. Distance (Nm)	Latitude	Longitude
Start					37 51.719 S	144 55.543 E
Turn 1	0.25	178.00	N/A	0.25	37 51.969 S	144 55.554 E
Turn 2	1.037	98.00	N/A	1.287	37 52.113 S	144 56.854 E
Turn 3	0.553	216.00	N/A	1.84	37 52.560 S	144 56.442 E
Turn 4	0.841	102.00	N/A	2.681	37 52.735 S	144 57.484 E
Turn 5	1.203	231.00	N/A	3.884	37 53.491 S	144 56.300 E
Turn 6	0.786	278.00	N/A	4.67	37 53.382 S	144 55.315 E
Turn 7	0.609	226.00	N/A	5.279	37 53.804 S	144 54.760 E
Turn 8	1.002	285.00	N/A	6.281	37 53.545 S	144 53.535 E
Turn 9	0.525	46.00	N/A	6.806	37 53.181 S	144 54.013 E
Turn 10	0.748	292.00	N/A	7.554	37 52.901 S	144 53.135 E
Turn 11	0.902	84.00	N/A	8.456	37 52.807 S	144 54.270 E
Turn 12	0.831	100.00	N/A	9.287	37 52.951 S	144 55.306 E
Turn 13	0.811	349.00	N/A	10.098	37 52.155 S	144 55.111 E
Turn 14	0.411	53.00	N/A	10.509	37 51.908 S	144 55.526 E
Finish	0.186	4.00	N/A	10.695	37 51.723 S	144 55.542 E