



RVMYC CUP

TIME TRIAL

BRIEFING INSTRUCTIONS

Saturday 15th October, 2022

- CHART:** TACK TRACKER SOFTWARE MAP **BEARINGS:**
ALL BEARINGS GIVEN ARE TRUE **DISTANCE:**
ALL DISTANCES ARE IN NAUTICAL MILES
- START LINE:** AN IMAGINARY LINE EXTENDING APPROXIMATELY FROM CHANNEL MARKER #17 50m ALONG THIS LINE FROM #17.
- FINISH LINE:** AN IMAGINARY LINE EXTENDING APPROXIMATELY FROM CHANNEL MARKER #21 50m ALONG THIS LINE FROM #21.
- DATUM:** A POSITION ON THE START LINE THAT IS THE APPROXIMATE POSITION OF #17.
37 51.773S 144 55.300E
- TIME:** GPS TIME.
- ID:** CLUB BURGEES MUST BE FLOWN.
- SAFETY:** COMPETITORS MUST OBSERVE NAVIGATIONAL RULES ESPECIALLY IN RELATION TO GIVING WAY TO OTHER VESSELS. SPECIAL CARE MUST BE TAKEN AT TURNING POINTS AND WHEN CROSSING CHANNELS. COMPETITORS MUST ALWAYS GIVE WAY TO COMMERCIAL SHIPPING, THIS INCLUDES MAKING SURE A SHIP IS AWARE OF A COMPETITOR'S INTENTIONS. NAVIGATION AIDS HAVE BEEN USED AS TURN POINT MARKERS, SKIPPERS ARE RESPONSIBLE FOR ENSURING THEIR BOATS DO NOT COLLIDE WITH THESE MARKERS.
- WEATHER:** IN THE EVENT OF INCLEMENT WEATHER, PHONE BEN KOUTOUKIDIS 0487 887 887 AFTER 1200 HOURS ON THE DAY OF THE EVENT.
- NOTES:**
- 1.The trial will be conducted using the TACK TRACKER system and in line with the Navrally Rules as adopted by RVMYC November 2013 as much as possible. Copies of the Rules are available from the RVMYC website.
 - 2.Checks will consist of a series of imaginary gates positioned at the start and finish lines and at all turn points. The gate boundaries will be 100m to the outside of the turn marker. The penalty for missing the start gate will be 100 points. Missing other gates will incur a 50 point penalty.
 - 3.It is the responsibility of each skipper to make sure their Tack Tracker is switched on and logging prior to starting the event. Tack Tracker usage instructions are available from the Race Committee on request.
 - 4.Vessels must be on course and speed 1 cable before the start line. All vessels must keep at least 1 cable clear of the start line unless actually starting.
 - 5.Official event start time will be 14.00 hours. Individual start times will be emailed to the address supplied on the entry form.
 - 6.It is the responsibility of each skipper to monitor weather conditions and withdraw from the event if at any time they consider their vessel or crew at risk.
 - 7.As the course uses physical markers as turn points, special attention is drawn to navrally rule 6(f).
 - 8.Special attention is also drawn to Navrally Rules Appendix A, (a), (b), (c), (d), (e), (f) & (k).

For further information please call:

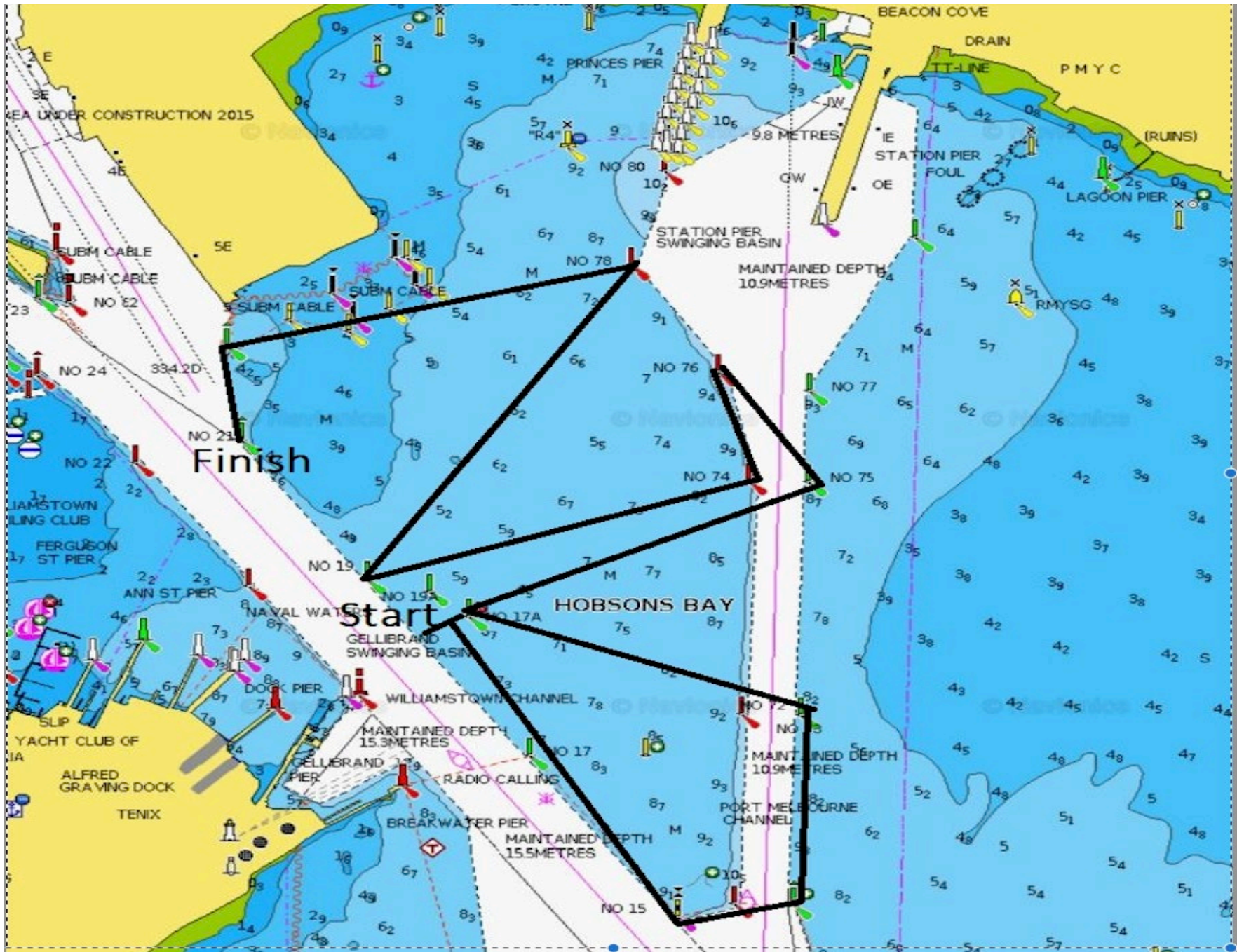
CLUB: 9393 2888 OR BEN KOUTOUKIDIS: 0487 887 887 KEN WARREN 0417 509 373.

RADIO WATCH: A WATCH WILL BE KEPT ON CHANNEL 16 VHF

EVENT COMMITTEE: Ben Koutoukidis, Ken Warren

Course Instructions

| Leg | Instructions |
|---------|--|
| START | Marker 17 kept on the port side |
| TURN 1 | Head S to marker 15 turn at marker on your port side head to marker 71 |
| TURN 2 | Round Marker 71 keeping marker on the Port side continue to marker 73 |
| TURN 3 | Round marker 73 keeping marker on Port side head toward marker 17A |
| TURN 4 | Round marker 17A with marker on Starboard side heading to marker 75 |
| TURN 5 | Round marker 75 with marker on Port side to marker 76 |
| TURN 6 | Round marker 76 with marker on the Port side back to marker 74 |
| TURN 7 | Round marker 74 on Starboard side heading marker 19 |
| TURN 8 | Round marker 19 on Starboard side heading to marker 78 |
| TURN 9 | Round marker 78 on port side heading to 81 |
| TURN 10 | Round marker 81 on port side heading to marker 21 Finish |
| FINISH | Finish with marker 21 on Starboard side |





Event: RVMYC Cup
Race Number: 1

Rally Course for: RVMYC Cup

15 Oct 2022

| Course | Rules | Leg Distance (Nm) | Leg Bearing (True) | Leg Bearing (Mag) | Cum. Distance (Nm) | Latitude | Longitude |
|---------|-------|-------------------|--------------------|-------------------|--------------------|-------------|--------------|
| Start | | | | | | 37 51.773 S | 144 55.300 E |
| Turn 1 | | 0.369 | 146.3 | N/A | 0.369 | 37 52.080 S | 144 55.559 E |
| Turn 2 | | 0.160 | 86.4 | N/A | 0.529 | 37 52.070 S | 144 55.761 E |
| Turn 3 | | 0.348 | 1.8 | N/A | 0.877 | 37 51.722 S | 144 55.775 E |
| Turn 4 | | 0.503 | 291.2 | N/A | 1.380 | 37 51.541 S | 144 55.182 E |
| Turn 5 | | 0.546 | 63.5 | N/A | 1.926 | 37 51.297 S | 144 55.800 E |
| Turn 6 | | 0.237 | 326.5 | N/A | 2.163 | 37 51.100 S | 144 55.635 E |
| Turn 7 | | 0.201 | 169.6 | N/A | 2.364 | 37 51.298 S | 144 55.681 E |
| Turn 8 | | 0.551 | 253.2 | N/A | 2.915 | 37 51.457 S | 144 55.014 E |
| Turn 9 | | 0.660 | 33.6 | N/A | 3.575 | 37 50.907 S | 144 55.476 E |
| Turn 10 | | 0.592 | 257.1 | N/A | 4.167 | 37 51.039 S | 144 54.745 E |
| Finish | | 0.170 | 170.8 | N/A | 4.338 | 37 51.207 S | 144 54.780 E |