



RVMYC **TAYLOR TIME TRIAL** **BRIEFING INSTRUCTIONS**

Saturday 18th June 2022

- CHART:** TACK TRACKER SOFTWARE MAP
- BEARINGS:** ALL BEARINGS GIVEN ARE TRUE
- DISTANCE:** ALL DISTANCES ARE IN NAUTICAL MILES
- START LINE:** AN IMAGINARY LINE EXTENDING APPROXIMATELY FROM CHANNEL MARKER #17 AT A BEARING OF APPROXIMATELY 54°. THE FINISH LINE EXTENDS APPROXIMATELY 50m ALONG THIS LINE FROM #17.
- FINISH LINE:** AN IMAGINARY LINE EXTENDING APPROXIMATELY FROM CHANNEL MARKER #81 AT A BEARING OF APPROXIMATELY 333°. THE START LINE EXTENDS APPROXIMATELY 50m ALONG THIS LINE FROM #81.
- DATUM:** A POSITION ON THE START LINE THAT IS THE APPROXIMATE POSITION OF #17. 37°51.799'S, 144°55.293'E (WGS 84)
- TIME:** GPS TIME.
- ID:** CLUB BURGEES MUST BE FLOWN.
- SAFETY:** COMPETITORS MUST OBSERVE NAVIGATIONAL RULES ESPECIALLY IN RELATION TO GIVING WAY TO OTHER VESSELS. SPECIAL CARE MUST BE TAKEN AT TURNING POINTS AND WHEN CROSSING CHANNELS. COMPETITORS MUST ALWAYS GIVE WAY TO COMMERCIAL SHIPPING, THIS INCLUDES MAKING SURE A SHIP IS AWARE OF A COMPETITOR'S INTENTIONS. NAVIGATION AIDS HAVE BEEN USED AS TURN POINT MARKERS, SKIPPERS ARE RESPONSIBLE FOR ENSURING THEIR BOATS DO NOT COLLIDE WITH THESE MARKERS.
- WEATHER:** IN THE EVENT OF INCLEMENT WEATHER, PHONE Chris Ackerman 0414 273 518 AFTER 1200 HOURS ON THE DAY OF THE EVENT.
- NOTES:**
1. The trial will be conducted using the TACK TRACKER system and in line with the Navrally Rules as adopted by RVMYC November 2013 as much as possible. Copies of the Rules are available from the RVMYC website.
 2. Checks will consist of a series of imaginary gates positioned at the start and finish lines and at all turn points. The gate boundaries will be 100m to the outside of the turn marker. The penalty for missing the start gate will be 100 points. Missing other gates will incur a 50 point penalty.
 3. It is the responsibility of each skipper to make sure their Tack Tracker is switched on and logging prior to starting the event. Tack Tracker usage instructions are available from the Race Committee on request.

4. Vessels must be on course and speed 1 cable before the start line. All vessels must keep at least 1 cable clear of the start line unless actually starting.
5. Official event start time will be 13:55 hours. Individual start times will be emailed to the address supplied on the entry form.
6. It is the responsibility of each skipper to monitor weather conditions and withdraw from the event if at any time they consider their vessel or crew at risk.
7. As the course uses physical markers as turn points, special attention is drawn to navrally rule 6.(f).
8. Special attention is also drawn to Navrally Rules Appendix A, (a), (b), (c), (d), (e), (f) & (k).

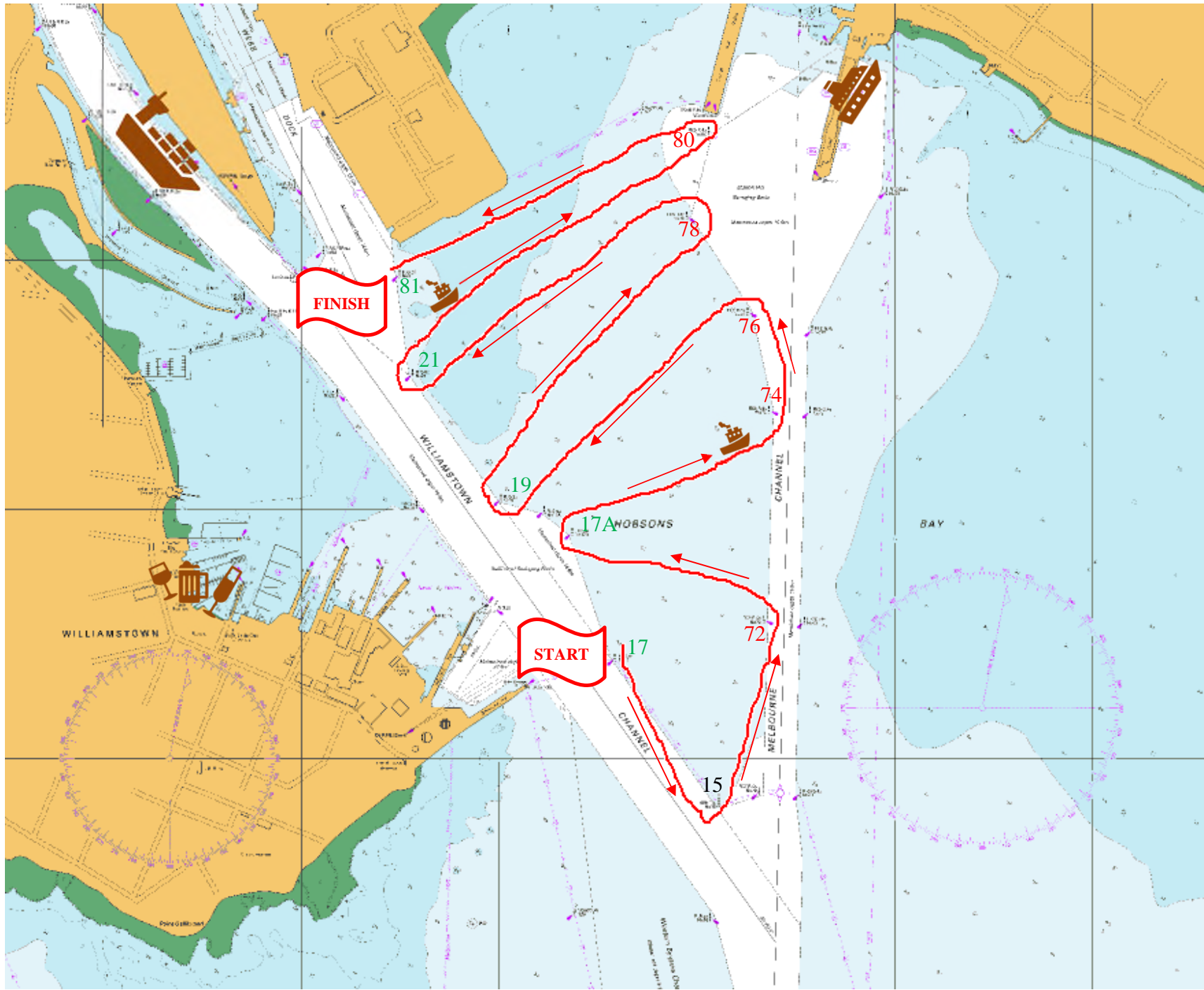
For further information please call:

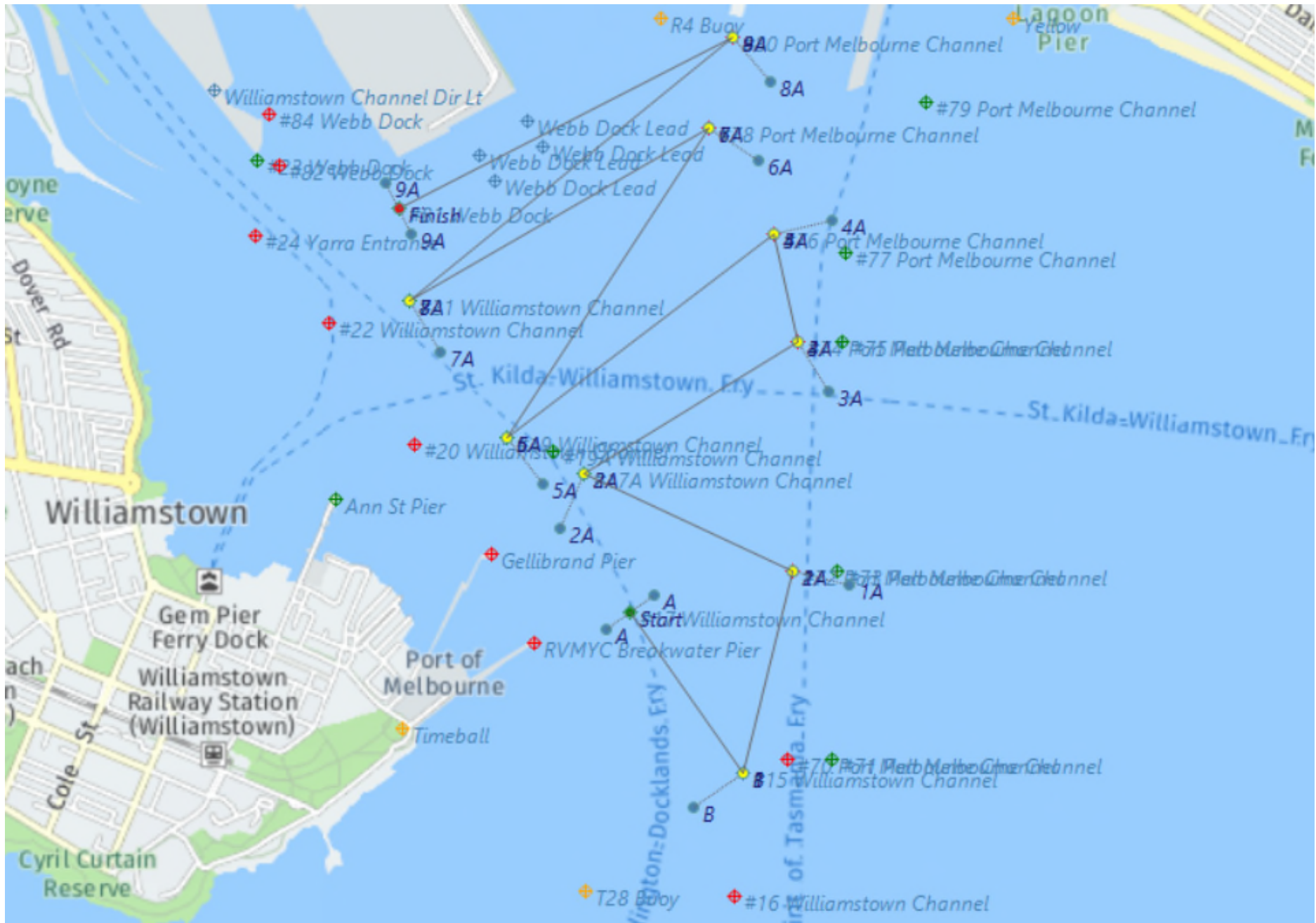
CLUB: 9393 2888 OR Chris Ackerman: 0414 273 518.

RADIO WATCH: A WATCH WILL BE KEPT ON CHANNEL 16 VHF

EVENT COMMITTEE: Chris Ackerman, Ken Warren

| Course Instructions | |
|----------------------------|---|
| Leg | Instructions |
| 1 | Start to the North of No.17 (Green). Passing No.17 (Green) on your Starboard side, head towards No.15 (YBY) and pass it on your Port side. |
| 2 | Make a turn to Port around No.15 (YBY) and head towards No.72 (Red) keeping No.15 (YBY) to Port. Pass No.72 (Red) on your Port side. |
| 3 | Make a turn to Port around No.72 (Red) and head towards No.17A (Green) keeping No.72 (Red) to Port. Pass No.17A (Green) on your Starboard side. |
| 4 | Make a turn to Starboard around No.17A (Green) and head towards No.74 (Red) keeping No.17A (Green) to Starboard. Pass No.74 (Red) on your Port side. |
| 5 | Make a turn to Port around No.74 (Red) and head towards No.76 (Red) keeping No.74 (Red) to Port. Pass No.76 (Red) on your Port side. |
| 6 | Make a turn to Port around No.76 (Red) and head towards No.19 (Green) keeping No.76 (Red) to Port. Pass No.19 (Green) on your Starboard side. |
| 7 | Make a turn to Starboard around No.19 (Green) and head towards No.78 (Red) keeping No.19 (Green) to Starboard. Pass No.78 (Red) on your Port side. |
| 8 | Make a turn to Port around No.78 (Red) and head towards No.21 (Green) keeping No.78 (Red) to Port. Pass No.21 (Green) on your Starboard side. |
| 9 | Make a turn to Starboard around No.21 (Green) and head towards No.80 (Red) keeping No.21 (Green) to Starboard. Pass No.80 (Red) on your Port side. |
| 10 | Make a turn to Port around No.80 (Red) and head towards No.81 (Green) keeping No.80 (Red) to Port. Pass No.81 (Green) on your Port side. You're finished. |







Rally Course for: Taylor Time Trial

18 Jun 2022

| | |
|-----------------------|-------------------|
| Event: | Taylor Time Trial |
| Race Number: | 1 |
| Magnetic Declination: | 11.8 |

| Course | Rules | Leg Distance (Nm) | Leg Bearing (True) | Leg Bearing (Mag) | Cum. Distance (Nm) | Latitude | Longitude |
|--------|-------|-------------------|--------------------|-------------------|--------------------|-------------|--------------|
| Start | | | | | | 37 51.799 S | 144 55.293 E |
| Turn 1 | | 0.360 | 144.8 | 133.0 | 0.360 | 37 52.093 S | 144 55.556 E |
| Turn 2 | | 0.381 | 13.6 | 1.7 | 0.741 | 37 51.723 S | 144 55.669 E |
| Turn 3 | | 0.421 | 294.9 | 283.0 | 1.163 | 37 51.546 S | 144 55.185 E |
| Turn 4 | | 0.462 | 58.1 | 46.3 | 1.625 | 37 51.302 S | 144 55.682 E |
| Turn 5 | | 0.203 | 347.8 | 336.0 | 1.828 | 37 51.104 S | 144 55.628 E |
| Turn 6 | | 0.619 | 232.7 | 220.9 | 2.447 | 37 51.479 S | 144 55.005 E |
| Turn 7 | | 0.678 | 33.2 | 21.4 | 3.125 | 37 50.912 S | 144 55.475 E |
| Turn 8 | | 0.634 | 240.0 | 228.1 | 3.758 | 37 51.229 S | 144 54.781 E |
| Turn 9 | | 0.766 | 50.6 | 38.8 | 4.525 | 37 50.743 S | 144 55.530 E |
| Finish | | 0.689 | 242.8 | 231.0 | 5.214 | 37 51.058 S | 144 54.754 E |