



RVMYC REGATTA **NAVRALLY** **BRIEFING INSTRUCTIONS**

Saturday 30th April 2022

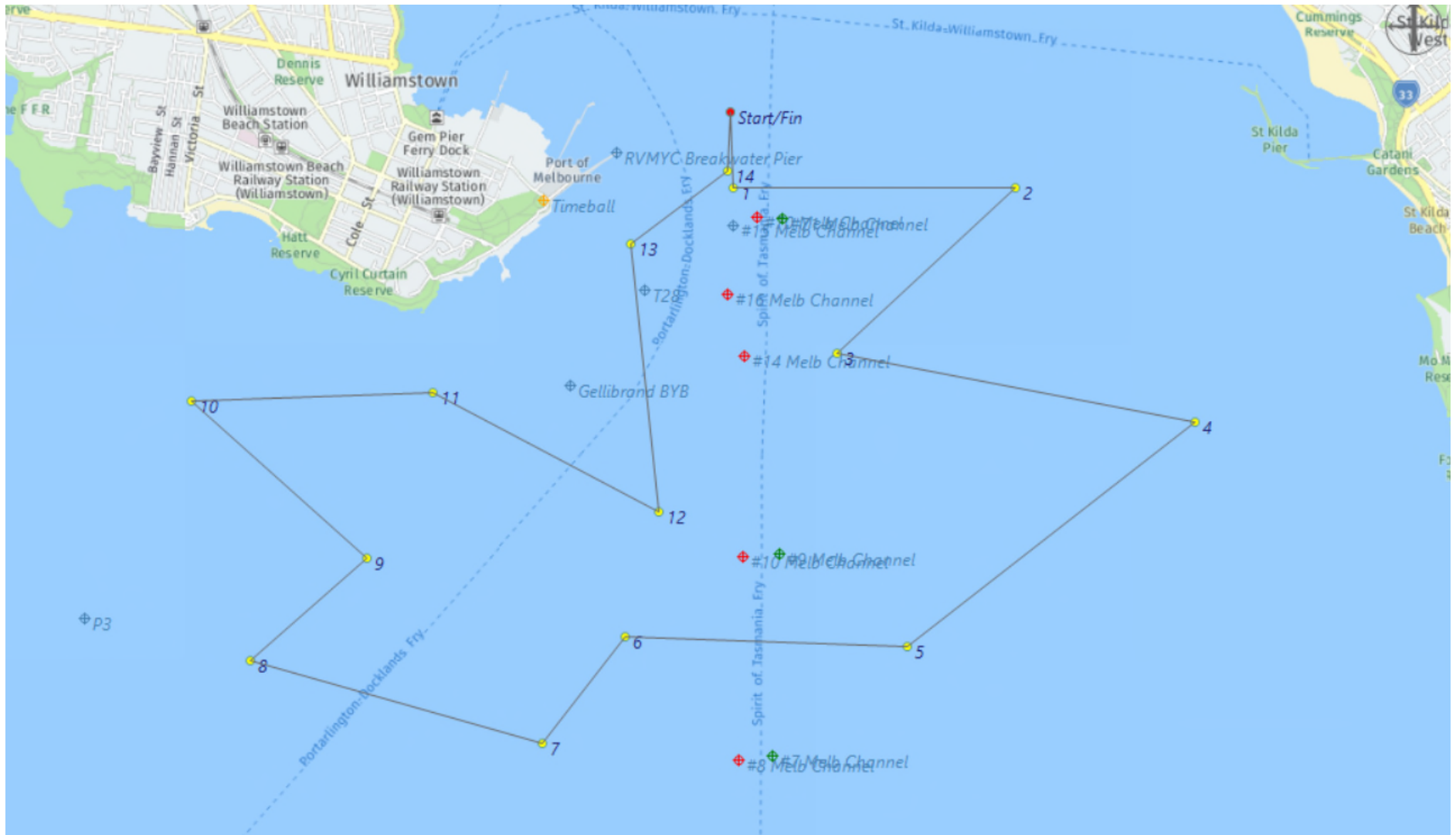
- CHART:** AUS 154 (2011-154)
AUS 155 (2011-47-409-601-602)
- BEARINGS:** ALL BEARINGS GIVEN ARE TRUE
- DISTANCE:** ALL DISTANCES ARE IN NAUTICAL MILES
- START LINE:** AN IMAGINARY LINE EXTENDING WEST FROM CHANNEL MARKER 73 THROUGH CHANNEL MARKER 72. THE START LINE EXTENDS .05Nm ALONG THIS LINE EITHER SIDE OF THE START DATUM.
- FINISH LINE:** APPROXIMATELY AS FOR START LINE
- DATUM:** A POSITION ON THE START LINE APPROXIMATELY 0.1NM FROM NO.72 CHANNEL MARKER. 37°51.719'S, 144°55.543'E (WGS 84)
- TIME:** GPS TIME.
- ID:** CLUB BURGEES MUST BE FLOWN.
- SAFETY:** CONTESTANTS MUST OBSERVE NAVIGATIONAL RULES AND SPECIAL CARE MUST BE TAKEN AT TURNING POINTS AND WHEN CROSSING CHANNELS.
- WEATHER:** IN THE EVENT OF INCLEMENT WEATHER, PHONE CHRIS ACKERMAN **0414 273 518** AFTER 0800 HOURS ON THE DAY OF THE EVENT.
- NOTES:**
1. The trial will be conducted using the TACK TRACKER system and in line with the Navrally Rules as adopted by RVMYC November 2013. Copies of the Rules are available from the RVMYC website.
 2. Checks will consist of a series of imaginary gates positioned along the course. The gate boundaries will be .05Nm either side of the course centre line. The penalty for missing the start gate (if used) will be 100 points. Missing other gates will incur a 50 point penalty. The total penalty incurred for missing gates will be 300 points.
 3. It is the responsibility of each skipper to make sure their Tack Tracker is switch on and logging prior to starting the event. Tack Tracker usage instructions are available from the Race Committee on request.
 4. Vessels must be on course and speed 1 cable before the start line. All vessels must keep at least 1 cable clear of the start line unless actually starting.
 5. Official event start time will be 0925 hours. Individual start times will be emailed to the address supplied on the entry form.
 6. It is the responsibility of each skipper to monitor weather conditions and withdraw from the event if at any time they consider their vessel or crew at risk.

For further information please call:

CLUB: 9393 2888 OR Chris Ackerman: 0414 273 518.

RADIO WATCH: A WATCH WILL BE KEPT ON CHANNEL 16 VHF

EVENT COMMITTEE: Chris Ackerman, Mark Rindfleish



Rally Course for: Regatta Cup

30 Apr 2022

Course	Rules	Leg Distance (Nm)	Leg Bearing	Cum. Distance (Nm)	Latitude	Longitude
Start					37 51.719 S	144 55.543 E
Turn 1		0.250	178.0	0.250	37 51.969 S	144 55.554 E
Turn 2		0.930	90.0	1.180	37 51.969 S	144 56.731 E
Turn 3		0.800	227.0	1.980	37 52.514 S	144 55.991 E
Turn 4		1.200	101.0	3.180	37 52.743 S	144 57.482 E
Turn 5		1.200	232.0	4.380	37 53.481 S	144 56.285 E
Turn 6		0.930	272.0	5.310	37 53.448 S	144 55.108 E
Turn 7		0.450	218.0	5.760	37 53.803 S	144 54.757 E
Turn 8		1.000	286.0	6.760	37 53.527 S	144 53.540 E
Turn 9		0.510	49.0	7.270	37 53.193 S	144 54.027 E
Turn 10		0.780	312.0	8.050	37 52.671 S	144 53.294 E
Turn 11		0.800	88.0	8.850	37 52.644 S	144 54.306 E
Turn 12		0.840	118.0	9.689	37 53.038 S	144 55.245 E
Turn 13		0.890	354.0	10.579	37 52.153 S	144 55.127 E
Turn 14		0.400	53.0	10.979	37 51.913 S	144 55.531 E
Finish		0.190	3.0	11.169	37 51.723 S	144 55.544 E