



RVMYC LONSDALE CUP **NAVRALLY** **BRIEFING INSTRUCTIONS**

Sunday 6th March 2022

- CHART:** AUS 154 (2011-154)
AUS 155 (2011-47-409-601-602)
- BEARINGS:** ALL BEARINGS GIVEN ARE TRUE
- DISTANCE:** ALL DISTANCES ARE IN NAUTICAL MILES
- START LINE:** AN IMAGINARY LINE EXTENDING FROM THE LIGHT ON THE END OF BREAKWATER PIER THROUGH CHANNEL MARKER 17A. THE START LINE EXTENDS .05Nm ALONG THIS LINE EITHER SIDE OF THE START DATUM.
- FINISH LINE:** APPROXIMATELY AS FOR START LINE
- DATUM:** A POSITION ON THE START LINE APPROXIMATELY 0.3NM FROM NO.17A CHANNEL MARKER. 37°51.262'S, 144°55.294'E (WGS 84)
- TIME:** TELSTRA TIME - Phone 1194.
- ID:** CLUB BURGEES MUST BE FLOWN.
- SAFETY:** CONTESTANTS MUST OBSERVE NAVIGATIONAL RULES AND SPECIAL CARE MUST BE TAKEN AT TURNING POINTS AND WHEN CROSSING CHANNELS.
- WEATHER:** IN THE EVENT OF INCLEMENT WEATHER, PHONE CHRIS ACKERMAN **0414 273 518** AFTER 0800 HOURS ON THE DAY OF THE EVENT.
- NOTES:**
1. The trial will be conducted using the TACK TRACKER system and in line with the Navrally Rules as adopted by RVMYC November 2013. Copies of the Rules are available from the RVMYC website.
 2. Checks will consist of a series of imaginary gates positioned along the course. The gate boundaries will be .05Nm either side of the course centre line. The penalty for missing the start gate (if used) will be 100 points. Missing other gates will incur a 50 point penalty. The total penalty incurred for missing gates will be 300 points.
 3. It is the responsibility of each skipper to make sure their Tack Tracker is switched on and logging prior to starting the event. Tack Tracker usage instructions are available from the Race Committee on request.
 4. Vessels must be on course and speed 1 cable before the start line. All vessels must keep at least 1 cable clear of the start line unless actually starting.
 5. Official start time will be 0925 hours. Start times will be emailed to the address supplied on the entry form.
 6. It is the responsibility of each skipper to monitor weather conditions and withdraw from the event if at any time they consider their vessel or crew at risk.
- For further information please call:
CLUB: 9393 2888 OR Chris Ackerman 0414 273 518.
- RADIO WATCH:** A WATCH WILL BE KEPT ON CHANNEL 16 VHF
- EVENT COMMITTEE:** Chris Ackerman, Mark Rindfleish

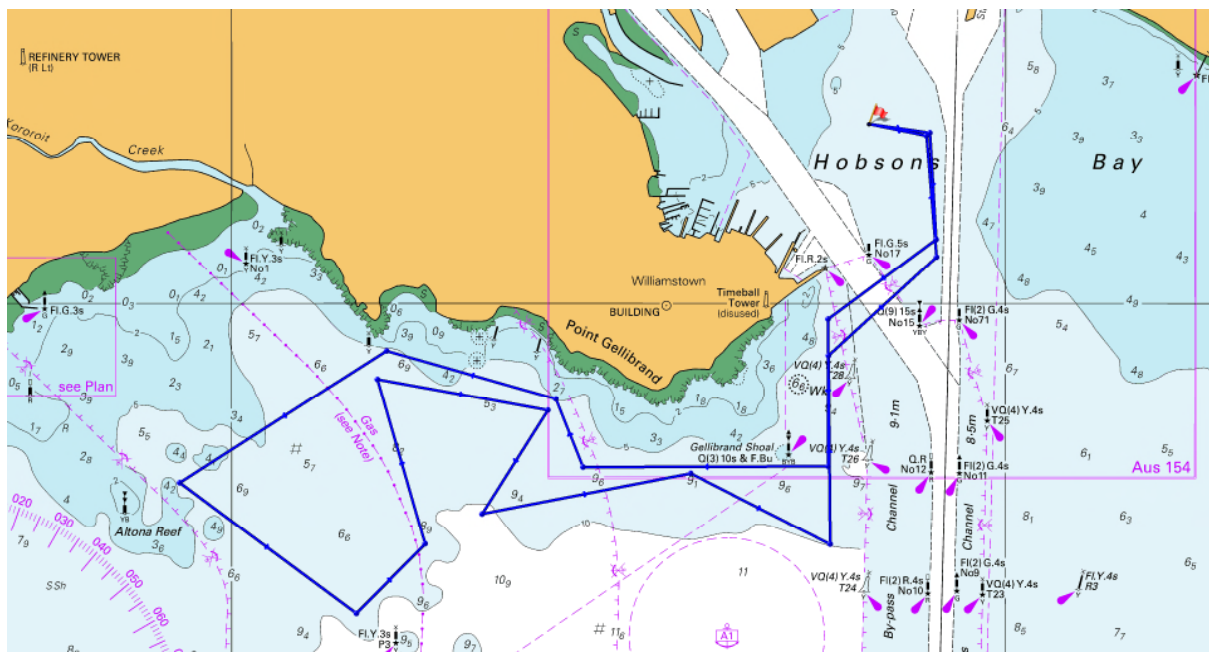


RVMYC Lonsdale Cup 2022

Course Instructions

Sunday 6th March 2022

Leg	Comments	Course (T)	Distance (NM)	Total (NM)
1	Start	098	.25	.25
2	Turn to Starboard. Keep No.74 then No.72 to Port.	177	.44	.69
3	Turn to Starboard. Take care crossing the channel.	233	.55	1.24
4	Turn to Port	180	.6	1.84
5	Turn to Starboard. Keep Gellibrand Light to Starboard.	270	1	2.84
6	Turn to Starboard	338	.3	3.14
7	Turn to Port	286	.72	3.86
8	Turn to Port	238	1	4.86
9	Turn to Port	127	.9	5.76
10	Turn to Port	045	.4	6.16
11	Turn to Port	344	.7	6.86
12	Turn to Starboard	100	.71	7.57
13	Turn to Starboard	213	.5	8.07
14	Turn to Port	079	.87	8.94
15	Turn to Starboard	117	.64	9.58
16	Turn to Port	359	.77	10.35
17	Turn to Starboard. Take care crossing the channel.	048	.6	10.95
18	Turn to Port. Keep No.72 then No.74 to Starboard.	355	.5	11.45
19	Turn to Port. Head to finish.	280	.23	11.68



Rally Course for: Lonsdale Cup

6 Mar 2022

Course	Rules	Leg Distance (Nm)	Leg Bearing	Cum. Distance (Nm)	Latitude	Longitude
Start					37 51.262 S	144 55.294 E
Turn 1		0.250	98.0	0.250	37 51.297 S	144 55.607 E
Turn 2		0.440	177.0	0.690	37 51.736 S	144 55.636 E
Turn 3		0.550	233.0	1.240	37 52.067 S	144 55.081 E
Turn 4		0.600	180.0	1.840	37 52.666 S	144 55.081 E
Turn 5		1.000	270.0	2.840	37 52.666 S	144 53.815 E
Turn 6		0.300	338.0	3.140	37 52.388 S	144 53.672 E
Turn 7		0.720	286.0	3.860	37 52.190 S	144 52.796 E
Turn 8		1.000	238.0	4.860	37 52.719 S	144 51.723 E
Turn 9		0.900	127.0	5.760	37 53.261 S	144 52.633 E
Turn 10		0.400	45.0	6.160	37 52.978 S	144 52.991 E
Turn 11		0.700	344.0	6.860	37 52.306 S	144 52.747 E
Turn 12		0.710	100.0	7.570	37 52.429 S	144 53.632 E
Turn 13		0.500	213.0	8.070	37 52.848 S	144 53.287 E
Turn 14		0.870	79.0	8.940	37 52.682 S	144 54.368 E
Turn 15		0.640	117.0	9.580	37 52.972 S	144 55.090 E
Turn 16		0.770	359.0	10.350	37 52.203 S	144 55.073 E
Turn 17		0.600	48.0	10.950	37 51.802 S	144 55.637 E
Turn 18		0.500	355.0	11.450	37 51.304 S	144 55.582 E
Finish		0.230	280.0	11.680	37 51.264 S	144 55.295 E