



# **RVMYC WHALLEY CUP** **NAVRALLY** **BRIEFING INSTRUCTIONS**

**Saturday 7<sup>th</sup> May 2022**

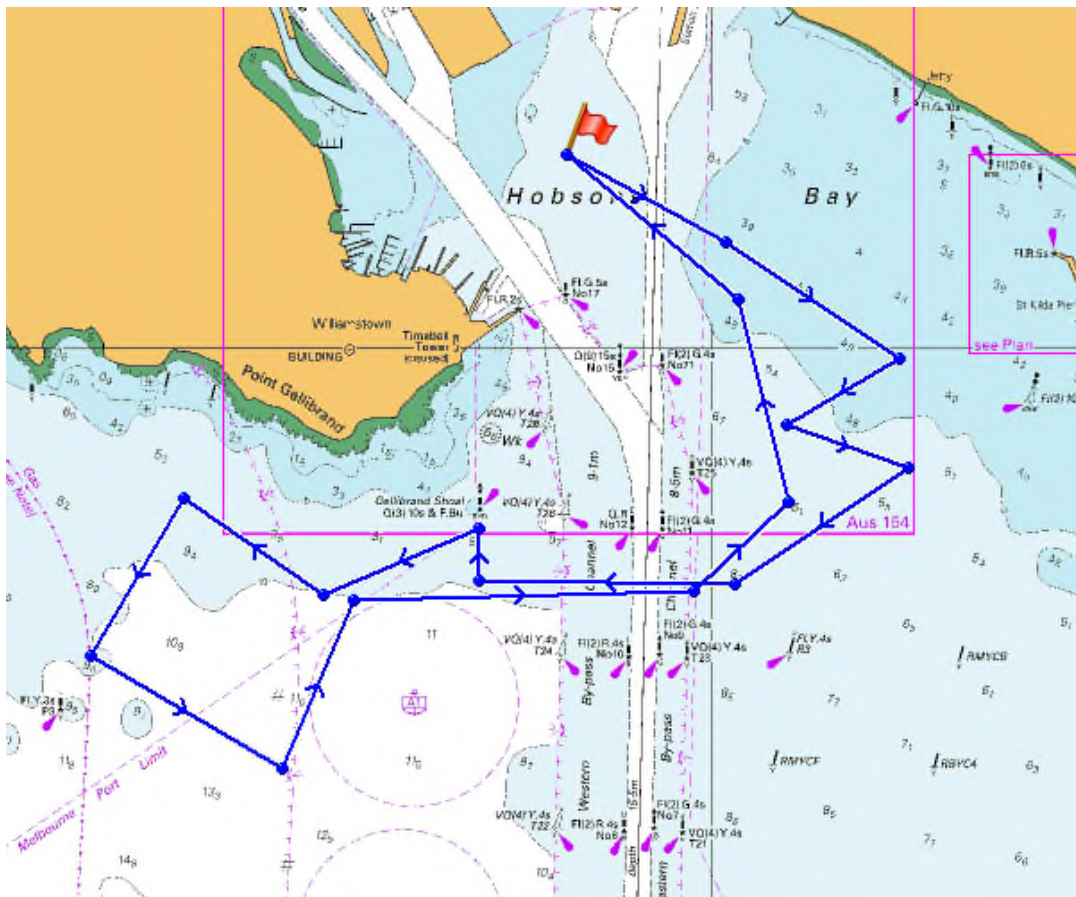
- CHART:** AUS 154 (2011-154)  
AUS 155 (2011-47-409-601-602)
- BEARINGS:** ALL BEARINGS GIVEN ARE TRUE
- DISTANCE:** ALL DISTANCES ARE IN NAUTICAL MILES
- START LINE:** AN IMAGINARY LINE EXTENDING FROM THE LIGHT ON THE END OF BREAKWATER PIER THROUGH CHANNEL MARKER 17A. THE START LINE EXTENDS .05Nm ALONG THIS LINE EITHER SIDE OF THE START DATUM.
- FINISH LINE:** APPROXIMATELY AS FOR START LINE
- DATUM:** A POSITION ON THE START LINE APPROXIMATELY 0.3NM FROM NO.17A CHANNEL MARKER. 37°51.262'S, 144°55.294'E (WGS 84)
- TIME:** GPS TIME.
- ID:** CLUB BURGEES MUST BE FLOWN.
- SAFETY:** CONTESTANTS MUST OBSERVE NAVIGATIONAL RULES AND SPECIAL CARE MUST BE TAKEN AT TURNING POINTS AND WHEN CROSSING CHANNELS.
- WEATHER:** IN THE EVENT OF INCLEMENT WEATHER, PHONE CHRIS ACKERMAN **0414 273 518** AFTER 0800 HOURS ON THE DAY OF THE EVENT.
- NOTES:**
1. The trial will be conducted using the TACK TRACKER system and in line with the Navrally Rules as adopted by RVMYC November 2013. Copies of the Rules are available from the RVMYC website.
  2. Checks will consist of a series of imaginary gates positioned along the course. The gate boundaries will be .05Nm either side of the course centre line. The penalty for missing the start gate (if used) will be 100 points. Missing other gates will incur a 50 point penalty. The total penalty incurred for missing gates will be 300 points.
  3. It is the responsibility of each skipper to make sure their Tack Tracker is switch on and logging prior to starting the event. Tack Tracker usage instructions are available from the Race Committee on request.
  4. Vessels must be on course and speed 1 cable before the start line. All vessels must keep at least 1 cable clear of the start line unless actually starting.
  5. Official event start time will be 0925 hours. Individual start times will be emailed to the address supplied on the entry form.
  6. It is the responsibility of each skipper to monitor weather conditions and withdraw from the event if at any time they consider their vessel or crew at risk.
- For further information please call:  
**CLUB: 9393 2888 OR Chris Ackerman: 0414 273 518.**
- RADIO WATCH:** A WATCH WILL BE KEPT ON CHANNEL 16 VHF
- EVENT COMMITTEE:** Chris Ackerman, Mark Rindfleish

# RVMYC Whalley Cup 2022

## Course Instructions

### Saturday 7<sup>th</sup> May 2022

Leg	Comments	Course (T)	Distance (NM)	Total (NM)
1	Start	118	.7	.7
2	Turn to Starboard.	123	.8	1.5
3	Turn to Starboard	240	.5	2.0
4	Turn to Port	109	.5	2.5
5	Turn to Starboard	236	.8	3.3
6	Turn to Starboard	270	.98	4.28
7	Turn to Starboard	359	.2	4.48
8	Turn to Port	246	.65	5.13
9	Turn to Starboard	304	.65	5.78
10	Turn to Port	210	.7	6.48
11	Turn to Port	120	.85	7.33
12	Turn to Port	022	.7	8.03
13	Turn to Starboard	088	1.32	9.35
14	Turn to Port	046	.5	9.85
15	Turn to Port	345	.8	10.65
16	Turn to Port. Head to Finish.	309	.86	11.51



## Rally Course for: Whalley Cup

7 May 2022

Course	Rules	Leg Distance (Nm)	Leg Bearing	Cum. Distance (Nm)	Latitude	Longitude
Start					37 51.262 S	144 55.294 E
Turn 1		0.700	118.0	0.700	37 51.590 S	144 56.076 E
Turn 2		0.800	123.0	1.500	37 52.026 S	144 56.925 E
Turn 3		0.500	240.0	2.000	37 52.276 S	144 56.377 E
Turn 4		0.500	109.0	2.500	37 52.438 S	144 56.976 E
Turn 5		0.800	236.0	3.300	37 52.885 S	144 56.136 E
Turn 6		0.980	270.0	4.280	37 52.885 S	144 54.895 E
Turn 7		0.200	359.0	4.480	37 52.685 S	144 54.891 E
Turn 8		0.650	246.0	5.130	37 52.949 S	144 54.139 E
Turn 9		0.650	304.0	5.780	37 52.586 S	144 53.457 E
Turn 10		0.700	210.0	6.480	37 53.192 S	144 53.014 E
Turn 11		0.850	120.0	7.329	37 53.617 S	144 53.946 E
Turn 12		0.700	22.0	8.029	37 52.968 S	144 54.278 E
Turn 13		1.320	88.0	9.349	37 52.922 S	144 55.948 E
Turn 14		0.500	46.0	9.849	37 52.575 S	144 56.403 E
Turn 15		0.800	345.0	10.650	37 51.803 S	144 56.141 E
Finish		0.860	309.0	11.510	37 51.262 S	144 55.295 E