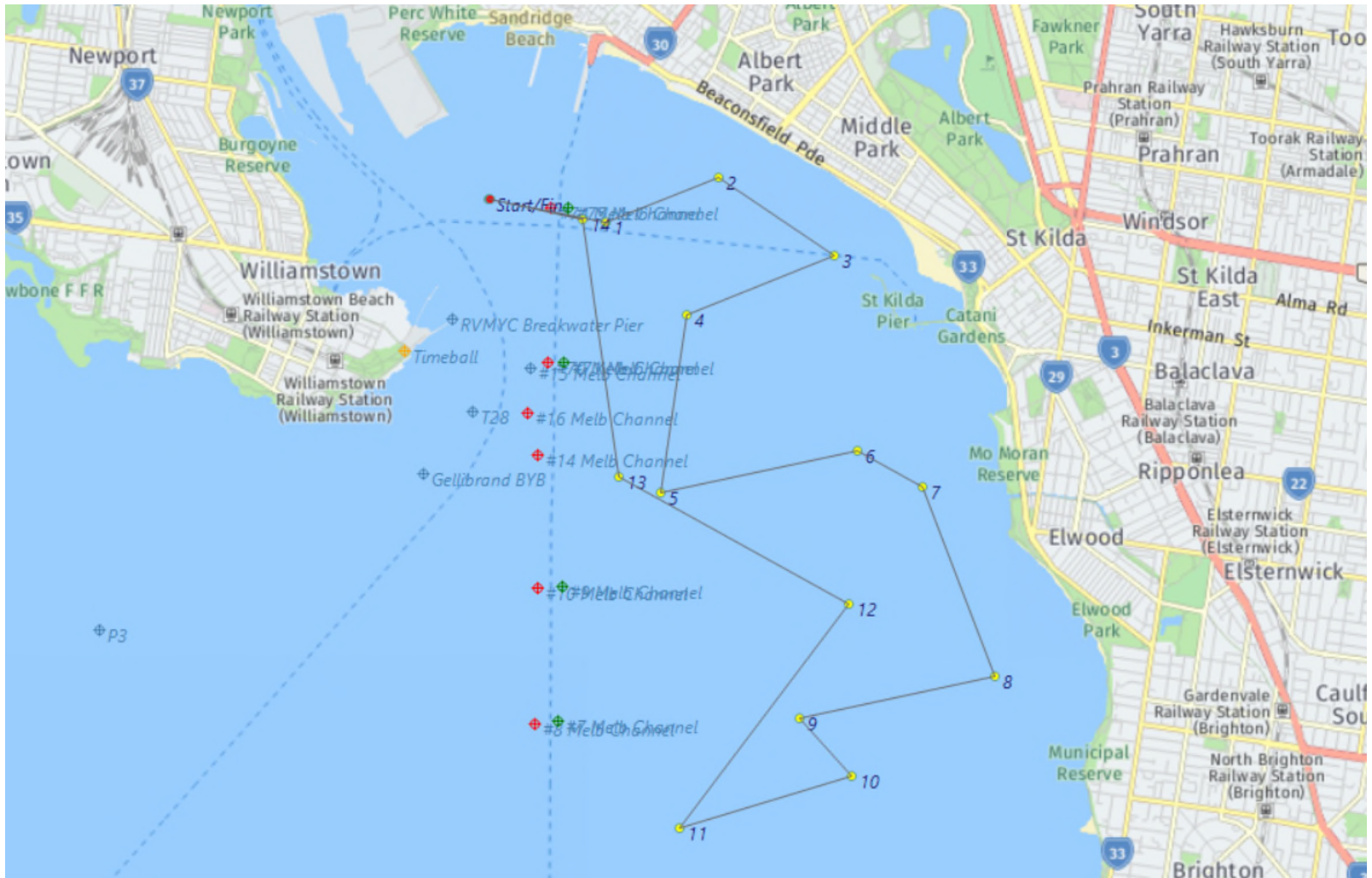




RVMYC MARCONI TROPHY **NAVRALLY** **BRIEFING INSTRUCTIONS**

Sunday 10th April 2022

- CHART:** AUS 154 (2011-154)
AUS 155 (2011-47-409-601-602)
- BEARINGS:** ALL BEARINGS GIVEN ARE TRUE
- DISTANCE:** ALL DISTANCES ARE IN NAUTICAL MILES
- START LINE:** AN IMAGINARY LINE EXTENDING FROM THE LIGHT ON THE END OF BREAKWATER PIER THROUGH CHANNEL MARKER 17A. THE START LINE EXTENDS .05Nm ALONG THIS LINE EITHER SIDE OF THE START DATUM.
- FINISH LINE:** APPROXIMATELY AS FOR START LINE
- DATUM:** A POSITION ON THE START LINE APPROXIMATELY 0.3NM FROM NO.17A CHANNEL MARKER. 37°51.262'S, 144°55.294'E (WGS 84)
- TIME:** GPS TIME.
- ID:** CLUB BURGEES MUST BE FLOWN.
- SAFETY:** CONTESTANTS MUST OBSERVE NAVIGATIONAL RULES AND SPECIAL CARE MUST BE TAKEN AT TURNING POINTS AND WHEN CROSSING CHANNELS.
- WEATHER:** IN THE EVENT OF INCLEMENT WEATHER, PHONE CHRIS ACKERMAN **0414 273 518** AFTER 0800 HOURS ON THE DAY OF THE EVENT.
- NOTES:**
1. The trial will be conducted using the TACK TRACKER system and in line with the Navrally Rules as adopted by RVMYC November 2013. Copies of the Rules are available from the RVMYC website.
 2. Checks will consist of a series of imaginary gates positioned along the course. The gate boundaries will be .05Nm either side of the course centre line. The penalty for missing the start gate (if used) will be 100 points. Missing other gates will incur a 50 point penalty. The total penalty incurred for missing gates will be 300 points.
 3. It is the responsibility of each skipper to make sure their Tack Tracker is switched on and logging prior to starting the event. Tack Tracker usage instructions are available from the Race Committee on request.
 4. Vessels must be on course and speed 1 cable before the start line. All vessels must keep at least 1 cable clear of the start line unless actually starting.
 5. Official event start time will be 0925 hours. Individual start times will be emailed to the address supplied on the entry form.
 6. It is the responsibility of each skipper to monitor weather conditions and withdraw from the event if at any time they consider their vessel or crew at risk.
- For further information please call:
CLUB: 9393 2888 OR Chris Ackerman: 0414 273 518.
- RADIO WATCH:** A WATCH WILL BE KEPT ON CHANNEL 16 VHF
- EVENT COMMITTEE:** Chris Ackerman, Mark Rindfleish



Rally Course for: Marconi Trophy

10 Apr 2022

Course	Rules	Leg Distance (Nm)	Leg Bearing	Cum. Distance (Nm)	Latitude	Longitude
Start		0		0	37 51.262 S	144 55.294 E
Turn 1		0.590	101.0	0.590	37 51.374 S	144 56.027 E
Turn 2		0.600	68.0	1.190	37 51.150 S	144 56.731 E
Turn 3		0.690	124.0	1.880	37 51.535 S	144 57.455 E
Turn 4		0.790	248.0	2.670	37 51.831 S	144 56.528 E
Turn 5		0.890	188.0	3.560	37 52.712 S	144 56.371 E
Turn 6		0.990	78.0	4.550	37 52.506 S	144 57.597 E
Turn 7		0.370	119.0	4.920	37 52.685 S	144 58.007 E
Turn 8		1.000	159.0	5.920	37 53.618 S	144 58.460 E
Turn 9		0.990	258.0	6.910	37 53.824 S	144 57.234 E
Turn 10		0.390	138.0	7.300	37 54.113 S	144 57.565 E
Turn 11		0.890	253.0	8.190	37 54.373 S	144 56.487 E
Turn 12		1.390	37.0	9.580	37 53.264 S	144 57.546 E
Turn 13		1.300	299.0	10.880	37 52.635 S	144 56.107 E
Turn 14		1.290	352.0	12.170	37 51.358 S	144 55.879 E
Finish		0.470	282.0	12.640	37 51.261 S	144 55.298 E